



79140 - 79160 Instructions

You have purchased the finest, 10 Degree Containment Seat available. These components (when installed correctly) are designed to reduce injury-producing movement of the upper body and head during a racing impact, but no device or component can prevent all injuries that may occur in auto racing. **Auto racing remains a very dangerous sport regardless of**

any protective devices you may use. Please read the instructions very carefully and if you have any questions please contact Kirkey Racing Fabrication Inc. 1-800-363-4885

FAILURE TO COMPLY WITH THESE INSTRUCTIONS MAY CAUSE SERIOUS INJURY OR DEATH

SETTING THE HEAD RESTRAINT

First install the four (4) vertical connector brackets to the head restraint using the eight (8) 5/16" x 1-3/4" bolts and washers provided. You have the choice of three (3) lateral mounting positions on head (see photo #5), and two (2) vertical mounting positions on bracket. Use four (4) threaded machined blocks provided on inside of head restraint box structure, (see photo #4). You can use a long 5/16" course thread bolt to help you position the block, (a pen or pencil can be used also). You need to position the most forward *block and bracket first so that you can access the rear one last.*
Keep bolts loose until proper position is selected.

Next with the driver sitting in the seat (with cover and padding installed), adjust the vertical height of the head restraint so that the top of the right side is at the eye port of helmet. Position the head restraint laterally so head pad is resting on the back of the helmet or head and neck restraint system, (see photo #3). There are two (2) lateral mounting positions available on the shoulder, and two (2) vertical mounting positions on the bracket, (see photo #2). Fasten the connector brackets to the side of shoulder restraint using eight (8) 5/16" x 1" bolts and washers supplied.
Keep bolts loose until proper position is selected.

The mounting holes on the head restraint are slotted to allow you to rotate the head for additional peripheral vision. Use only holes supplied for above mounting.

Torque all of the 5/16" bolts (16 in total) to 20 FT. LBS.

NOTE: Re torque bolts after each race.

Hardware List:

8- 5/16"x 1" Grade 8 bolts

4- Threaded Machined Blocks

8- 5/16" x 1-3/4" Grade 8 bolts

4- Connector Brackets

16- 5/16" Grade 8 washers

MOUNTING INSTRUCTIONS

For the bottom we recommend that you use no less than two (2) 5/16" (8mm) bolts directly through the bottom to frame, (spread the bolts out as far as possible to distribute the load). For the back we recommend no less than three (3) 5/16" (8mm) bolts using the mounting area in the shoulder box of the seat, (see photo #1). We also make a bracket for this if seat can't be mounted solid to roll cage, NEVER mount to sheet metal. The part number for the rear bracket is 99208, (see image below).

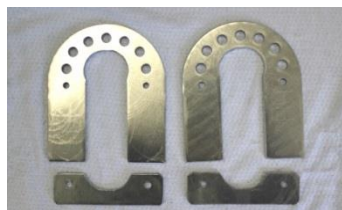
IMPORTANT: If back of seat is mounted below box structure as noted above, we recommend also mounting head restraint to -A-Frame using C Plates. Part number 99215, (see image below).

Be sure to check with your sanctioning body and/or track for their rules and regulations on seat mounting.

Part #99208



Part # 99215



If you are not qualified to perform such fabrication have the installation done by an expert familiar with the requirements of such installation.

Photo # 1



Photo #2

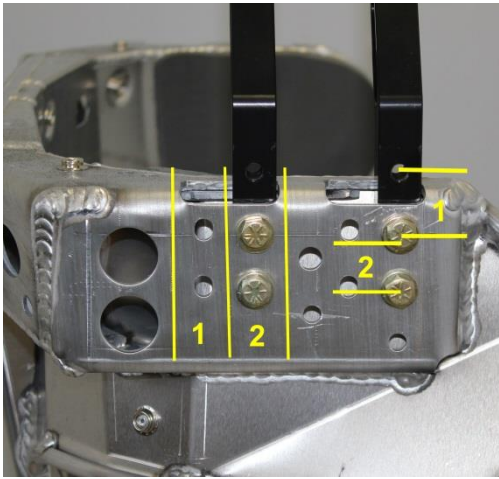


Photo #3

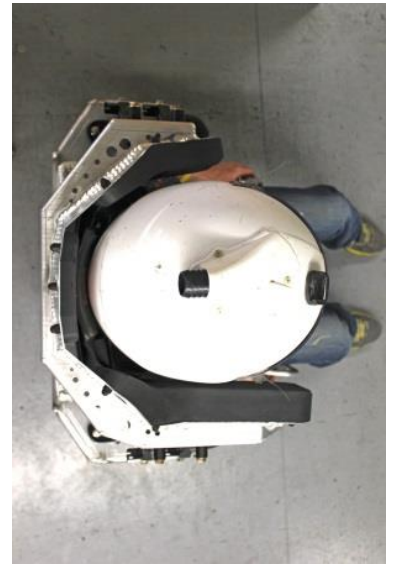


Photo #4

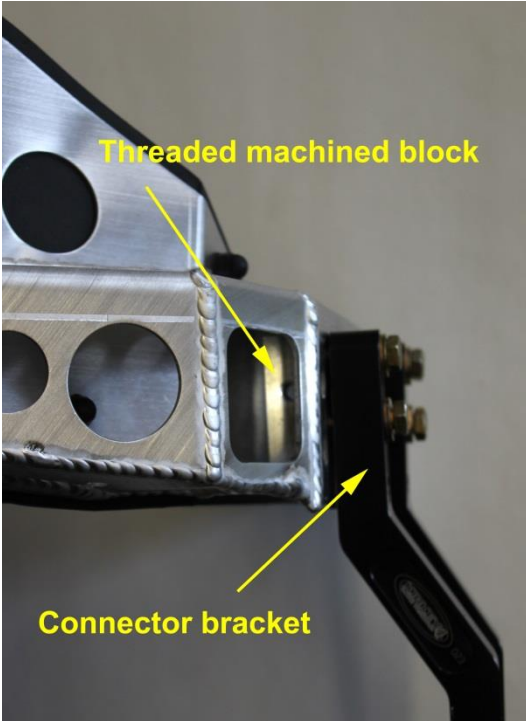
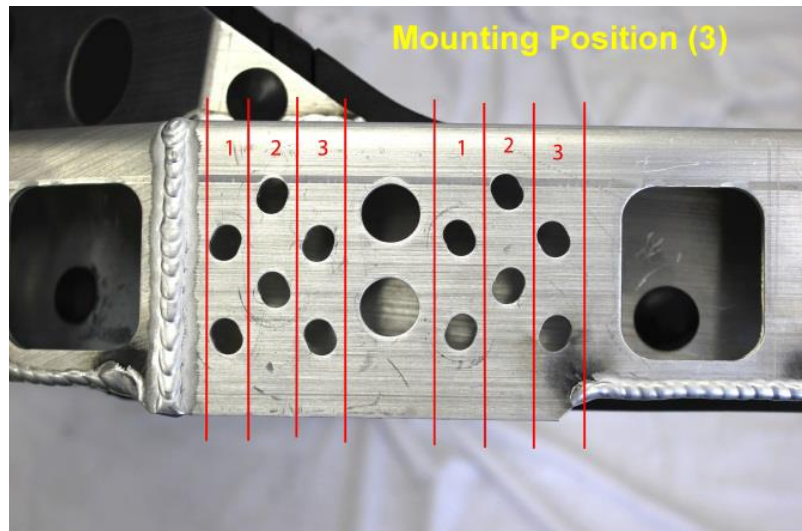


Photo #5



Cover Adjustment

We have designed the cover of the shoulder restraints with additional 1/2" padding on each side. This padding is removable if extra room is needed in the shoulder width area, (see photo #6).

We have designed the bottom of the seat to accommodate an extra 3/4" of high-density padding, (included). This pad is removable to adjust the height of the seat for extra tall drivers, (see photo #7).

Photo #6

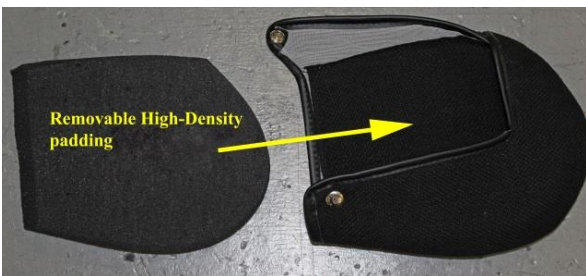


Photo #7



For more information please contact us
www.kirkeyracing.com kirkey@kirkeyracing.com
1-800-363-4885 (voice) 1-800-829-7072 (fax)

Not intended for highway or airplane use